



# CHARGE GUARDS

## Intelligent Split Charging Battery Management

### Charge Guard (AVSPC12/24 12/24 V):

### Charge Guard (AVSPC12/24 (2W) 12/24 V):

#### Fitting Instructions

- Connect positive from starting battery to unit main terminal
- Connect positive of auxiliary to auxiliary terminal
- Connect black lead to earth

#### Operation

When the engine is running the device senses the voltage from the alternator and allows the battery to charge the auxiliary battery.

When the voltage to the main battery drops the unit isolates and separates both batteries. This means the starting battery will always have enough power to start and the auxiliary battery will never be able to drain it.

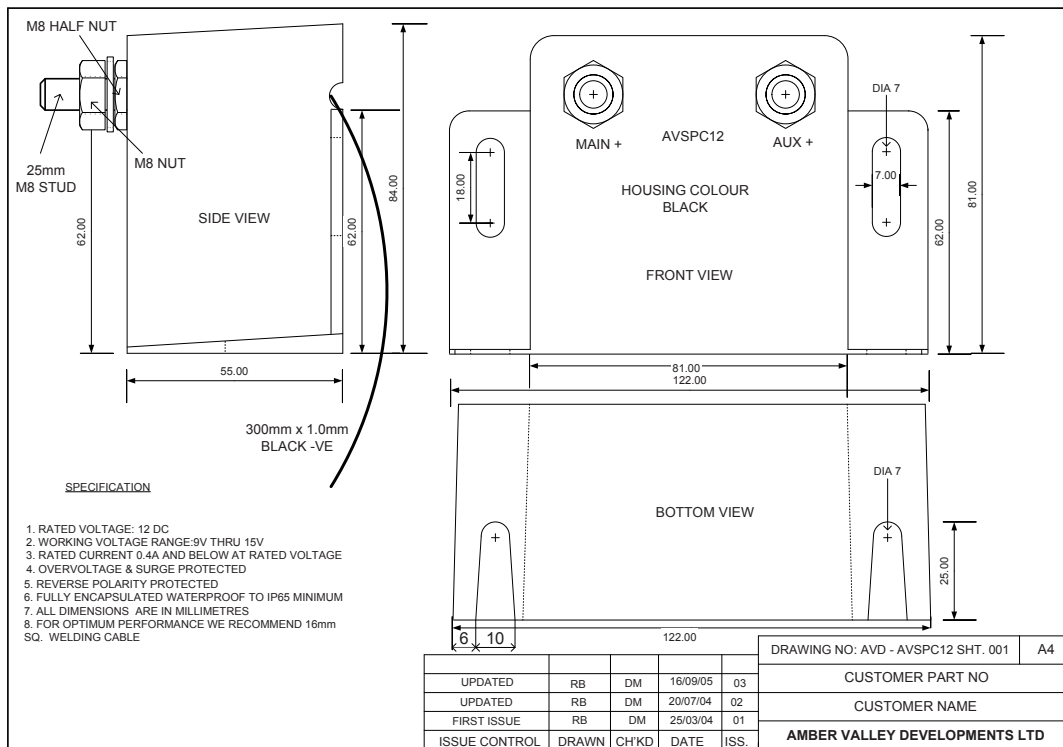
An essential unit especially where "intelligent" alternators are fitted.

#### Fitting Instructions

- Connect positive from starting battery to unit main terminal
- Connect positive of auxiliary to auxiliary terminal
- Connect black lead to earth
- Connect red lead to ignition circuit

#### Operation

When the ignition is on, the unit automatically charges the auxiliary battery.



Problems with flat batteries? Auxiliary equipment draining your starting battery? Fed up with expensive call outs?

**Fit CHARGE GUARD and save time and money**

Solidstate fully encapsulated electronics